

The logo features a stylized leaf icon on the left, which is a white shape with a light gray gradient, partially enclosed by a white line that forms a bracket-like shape around the text.

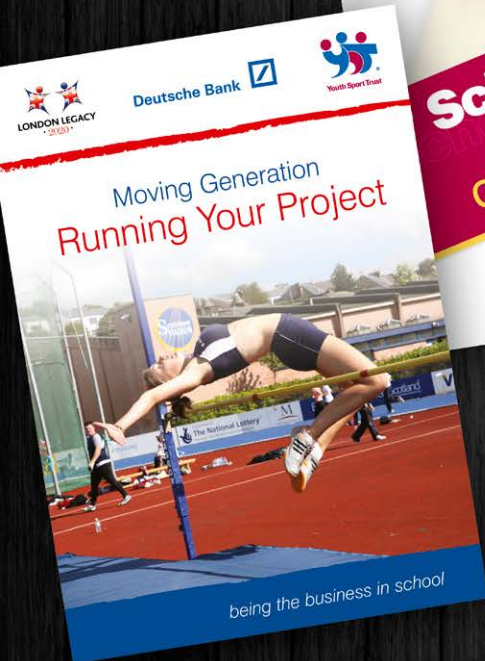
spring  
creative  
design | web | print | host

# brochure design

A range of brochures for Liverpool Housing Trust, BIMM Institute Manchester and Cheshire Trafford UK.



# brochure design



A range of brochures for Youth Sport Trust.

# brochure design

Brochure design for St Johns Care Home.

Welcome  
WE HOPE YOU ENJOY  
YOUR STAY WITH US AT

St Johns House  
RESIDENTIAL CARE HOME

RATED AS  
OUTSTANDING  
BY CQC



## Life at St Johns House

**W**e believe St Johns House is the perfect size; large enough to provide all the facilities and services our residents require, small enough to retain a personal and homely feel.

We have 35 single spacious private rooms with ensuite facilities, and a view of the gardens or surrounding countryside. 19 bedrooms are situated on the ground floor

and the remaining 16 are accessed using the passenger lift, stair lift or the stairs.

Residents who may be initially wary of using the lift are accompanied by a member of staff until they become confident to use it on their own. All rooms are connected to a central Nurse Call System to ensure an immediate response from staff.

It is important to us that our residents feel at home and although our rooms are all fully furnished, some residents like to bring small items of personal furniture. From home, have a telephone or broadband installed in their room and also like to have their own television for private viewing.

All our communal areas, bathing and toilet facilities have been designed in consultation with Occupational Therapists to ensure our residents have choice and independence.

Level access and a comprehensive range of bathing equipment help residents to bathe in comfort and privacy or with a level of assistance.

It is important to us that our residents have choices in every aspect of their daily life and our three lounges, three lounge/dining rooms and one sun lounge with lovely views of the gardens provide residents with plenty of variation for eating meals, relaxing and socialising. All doorways into the communal areas are accessible by a wheelchair ensuring everyone can enjoy the facilities.



# brochure design



Brochure design for The Millings Care Home.

## TRANSPARENT AND FAIR

- Our room rates are clearly publicised and apply to all residents
- 93% of our residents are privately funded
- We do not believe in privately funded residents' fees subsidising local authority placements and therefore we only accept local Authority placements if they meet the published room rate

## MAKING OUR HOME YOUR HOME

**T**he happiness and wellbeing of our residents is at the centre of everything we do at The Millings and when you visit us you will see we have a vibrant and active community at the home.

We continually invest in our home and the services we provide, developing a home that our residents tell us



encompass the things that are important to them:

Residents have regular meetings to express their views and wishes and have a monthly one-to-one with their designated Care Partner to ensure that their care plan is providing them with a happy and fulfilled life at the home.

If it is going to be home it needs to feel like home which is why freedom and personal choice play a major part in life at The Millings.

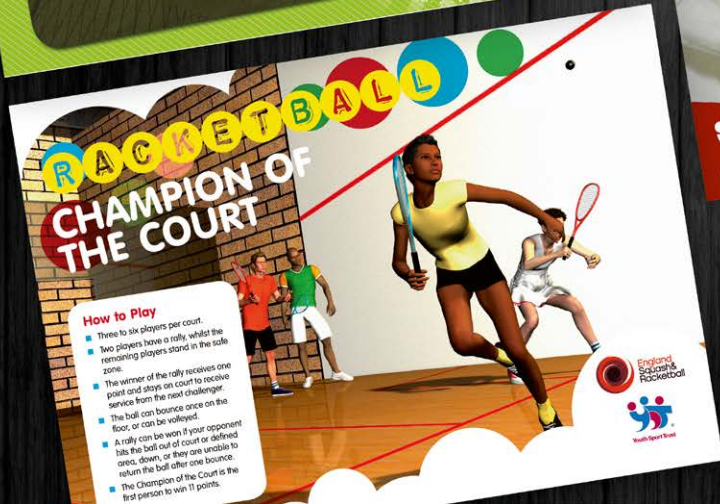
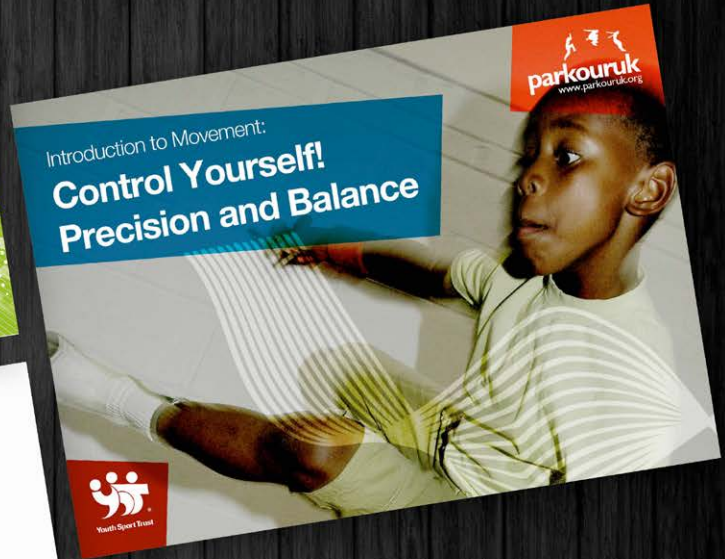
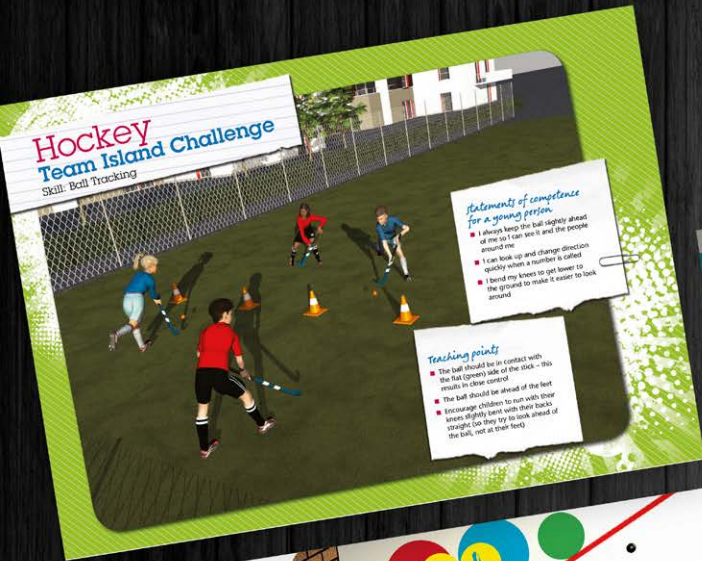
Our regular residents' meetings are lively and the feedback goes into making life at the home even better. Residents come and go as they please and our open door policy for family and friends means there is always a buzz around the home.

“ Mum could not be in a better place. She is settled, happy and is well cared for. The Millings is like one big family and I am so glad mum is part of it. ”



*A Beautiful Place to live*

# leaflet design



Instructional game cards distributed to schools across the UK by Youth Sports Trust.



Winner of the Network Rail Environmental Award for Innovation 2008

TroTrof® C1/9 is the award winning cable troughing system designed specifically for the UK's rail network.

At less than 18kg per unit, it is a lightweight alternative to its concrete equivalent. Robust and adaptable, it can be installed at sites with steep inclines and areas where weight bearing is an issue.

TroTrof's versatile construction allows it to be installed as a stand-alone system or integrated into existing concrete troughing, making it ideal for maintenance installations and upgrade projects.

Capable of withstanding weight of up to 20 tonnes, TroTrof's high load resistance is exemplary. Made from 100% recycled polymer, damage to units during transportation and installation is eliminated. TroTrof also requires four times less transportation resource, offering reduced costs and carbon emissions.



A range of leaflets for Trojan Services Limited.



Established in 2000, Trojan Services Limited pioneered the use of recycled polymer cable troughing in the UK rail industry.

Since gaining Network Rail product acceptance in 2006, approximately 1,000,000 units have been installed on Network Rail, various UK metro and London Underground networks.

All of TSE's products have won awards for innovation from the rail and plastics industry.



#### Sustainability

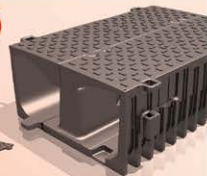
Made from 100% high grade recycled polymer, all Trojan products have a substantially lower carbon footprint than their traditional counterparts. TSE has commissioned a full life cycle assessment (LCA) report, which compares Trojan products with the traditional concrete products on the market. This report proves conclusively that TSE products offer significant sustainable and environmental benefits to the rail industry. A copy of the LCA is available on request.



#### Quality & Durability

TSE materials and processes are ISO 9001 compliant ensuring reliable and consistent product quality.

Trojan prides itself on the quality and reliability of its patented technology. Unlike other alternatives, TSE's customers confirm there are no breakages or damage during transport and installation. This ensures 100% of product delivered can be installed eliminating the need to even order to compensate for breakages.



Winner of the Network Rail Partnership Award for Innovation 2010

Tred is a large capacity cable trough and walkway is 700mm wide and compliant with Network cification for a safe walkway.

Network Rail Partnership Awards recognise excellence and Tred has the capacity of 2 x Trof units.

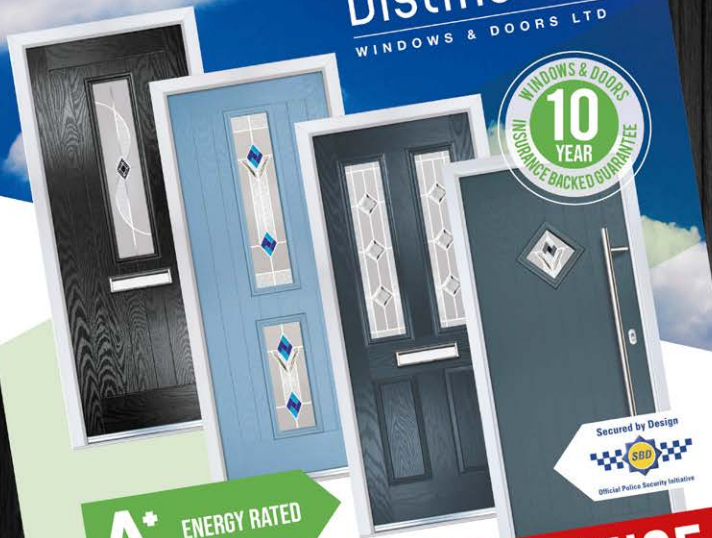
Tred's high capacity system, made from recycled polymer, is easy to install and offers significant cost savings and a long life span.

Tred also meets Network Rail's need for low to zero maintenance walking routes.

Tred has been awarded a green rating according to Network Rail's Manual Handling Assessment Chart.



Distinctive  
WINDOWS & DOORS LTD



A\* ENERGY RATED

Secured by Design



Official Police Security Initiative

# COMPOSITE DOOR RANGE

Your front door is the face of your property. It's the first thing you see when you get home in the evening, the last thing you see when you leave in the morning and the sight that welcomes your visitors.

Offering up to six times the insulation of a timber door, a composite door combines the look of timber with superb thermal performance making it the ultimate modern solution.

They are made from a variety of materials, including uPVC, wood, insulating foam and glass reinforced plastic (GRP). This combination of materials results in a very strong and secure door.

Colour options for both the door and the frame include White, Cream, Rosewood, Light Oak, and Irish Oak, as well as Grey, Black and Chartwell Green.

CALL 07557 857023 OR 0800 1930221 FOR A FREE QUOTE  
OR VISIT [WWW.DISTINCTIVEWINDOW.CO.UK](http://WWW.DISTINCTIVEWINDOW.CO.UK)

# leaflet design

Leaflet design for Distinctive Windows.

**WHY BUY TO HEAT YOUR HOME, THEN LOSE UP TO 20% THROUGH YOUR WINDOWS AND DOORS?**

**WINDOW RANGE**

Energy bills are on the increase, environmental concerns are higher on the agenda than ever before and building regulations are becoming more demanding every year. Choosing a window system that offers higher Windows Energy Ratings for a lower cost therefore makes good sense.

Our windows are covered by the 10 year guarantee against warping, splitting or cracking, with foils guaranteed for colour fastness.

The factory where our window profiles are manufactured is accredited with ISO 9001 quality standards.

Each window in our range is made from lead free, energy efficient, recyclable uPVC, making them a sustainable choice.

**ENERGYPLUS PROFILES CAN ACHIEVE A WINDOW ENERGY RATING OF A STAGGERING A+12**

**SCRAPPAGE SCHEME**

Depending on the age of your windows we offer to buy back your old timber, aluminium and uPVC windows and doors. Subject to availability this can guarantee huge savings on your new windows.

CALL 07557 857023 OR 0800 1930221  
EMAIL [INFO@DISTINCTIVEWINDOW.CO.UK](mailto:INFO@DISTINCTIVEWINDOW.CO.UK)  
OR VISIT [WWW.DISTINCTIVEWINDOW.CO.UK](http://WWW.DISTINCTIVEWINDOW.CO.UK)

**spring  
creative**  
design | web | print | host



ISSUE 73

APRIL - MAY 2020

# INSIDE

## WILMSLOW & ALDERLEY EDGE

# magazine design

Community magazine design and artwork for INSIDE Magazines.

## quick crossword

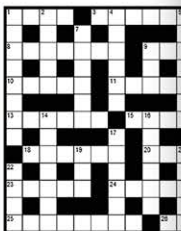
### Across

1. Disgust, conceal (4)
3. Bewilder, stupefy (8)
8. Article of clothing (7)
9. Impression (5)
18. Board game (5)
11. Document, log (6)
13. Direction of this clue! (6)
15. Overpass (6)
18. Type of reptile (6)
20. Thick, impalpable (5)
23. Nonsense, idios (5)
24. Scrutinise (7)
25. Won back (4)
26. Certificate, lease (4)

### Down

1. Predecessor (8)
2. Tennis term (5)
4. Sixth planet from the sun (6)
5. Neglect, disregard (7)
6. Take to heart (4)
7. Population tally (6)
9. Membranous pouch (3)
12. Thwarted (6)
14. Pooing (7)
16. Properly salad vegetable (5)
17. Lead, reverse (5)
19. Intimate, consanguine (3)
21. Sibling's daughter (5)
22. Bazaar, carnival (4)

Solutions on page 59



## sudoku

7	8	4	1	3				
6	8		1	5				
	4	3	2	6				
3	6			2				
5	6	2	3	8	1			
	4			8	7			
	5	3	1	7				
9	3		5	6				
8	9	6	5	3				

You don't need to be a genius. These puzzles are logic alone.

Watch out! Sudoku is highly addictive.

## Simply Books

book club choice

THE PARTY  
ELIZABETH DAY

### Simply Books

228 Main Lane, Bransford,  
Shefford MK1 1BB

01525 4281143

www.simplybooks.info

Opens Tuesday to Saturday  
from 10 to 5:30pm



Andrew Caut



My first choice is a gripping psychological thriller - **The Party** by **Elizabeth Day**. Martin Gimson and Ben Fitzmaurice have been best friends for 25 years, since their days together at one of the country's most exclusive public schools. They are an unlikely pair - the scholarship boy with the wrong accent and the dazzling popular and wealthy aristocrat. But Ben has a dangerous secret that only Martin shares. At Ben's 40th birthday party, the cream of the British establishment gathers in a haze of champagne and gin - old money and new. There's something awfully in the air - is Martin about to spill the beans and what will be the fall out?

This is a stylish and suspenseful novel about class, privilege and power - think *Bridgerton* revisited meets *The Talented Mr Ripley* - with bits of *Twists* and *Turn*. It's one of these books you just have to read at a gallop because you absolutely have to know how it's all going to turn out.

**Confession With Blue Horses** by **Sophie Hardach** is set in East Germany - in the years before and after the collapse of the Berlin Wall. Tobi and Ella's childhood in East Berlin is shrouded in mystery. How adults living in London there past is full of unanswered questions. Both remember their family's daring attempt to escape to the West. But what happened next? Where did their parents disappear to and what happened to their little brother Holko?

When Ella finds a stash of her mother's old notebooks, she and Tobi embark on a search that will take them back to Berlin as they try and piece together their past and find their long-lost brother.

This is a fascinating portrayal of life under Communism East Germany - the physical hardship and material deprivation but also the menacing tyranny of living in a police state where you could never be sure who to trust and where the most innocuous of conversations might attract the attention of the STASI (secret police). The early part of the story of Ella's childhood is all the more remarkable for being set in the 1980s - you could be forgiven for thinking you're reading about the 1950s!

And for the children... **My Pet Star** by **Corinne Averis** is a delightful new picture book. When a little girl discovers a star who has fallen to Earth, she takes him home and nurses him back to health - a beautiful tale of friendship... perfect for any child who has ever longed for a pet of their own!

The local magazine our readers love to keep  
One of six magazines delivered to over 45,000 homes

spring  
creative

design | web | print | host

# magazine design

## Children's Activities

Things to do with pre-school kids

**MONDAY**  
**Playgroup 9.30-11.30am**  
 Pympton Baptist Church, Contact 01425 493006  
**Handmade baby clothes for 10p** - contact:  
 Mrs G. 15brink, Essex, Essex - 3 years, Amana 3.5 years  
 Contact: emmaly@essex.london

**TUESDAY**  
**Playgroup 9.30-11.30am**  
 See time only, open to all preschool aged children and babies  
 Pay per week. Please call 01425 871115, email: pcc@pccpympton.org.uk  
 Pympton Methodist Church Rooms 3, 10 Park Lane,  
 opposite Pympton Co-op Hall, next to Waterloo.

**WEDNESDAY**  
**Anglican Stairs, Southill Group 9.30-11.30am**  
 See time only, St George's Church, Pympton. For more information contact Rev Huw Jones 01425 870027 or email  
 huw@stgeorgeschurch.org  
**The School Bus 2.0-2.30pm**  
 See time only, St Martin's Church Hall, Stripple Road, North,  
 Higher Pympton. All children welcome from age 18 months.  
 Contact 01903 277923 or email: noreen@stmartins.org.uk

**THURSDAY**  
**Parent & Toddler Group 9.30-11.30am**  
 See time only, Pympton Methodist Church, For more information  
 contact the church office on 01425 871192  
**Playgroup 10.30-11.30am**  
 Pympton Library, no booking and no charge. All babies  
 and toddlers welcome with parents/careers. Contact 01425 210789

**FRIDAY**  
**Playgroup 9.30-11.30am**  
 See time only, open to all preschool aged children and babies  
 Pay per week. Please call 01425 871115, email: pcc@pccpympton.org.uk  
 Pympton Methodist Church Rooms 3, 10 Park Lane,  
 opposite Pympton Co-op Hall, next to Waterloo.

**SATURDAY**  
**Playgroup 9.30-11.30am**  
 See time only, open to all preschool aged children and babies  
 Pay per week. Please call 01425 871115, email: pcc@pccpympton.org.uk  
 Pympton Methodist Church Rooms 3, 10 Park Lane,  
 opposite Pympton Co-op Hall, next to Waterloo.

**SUNDAY**  
**Playgroup 9.30-11.30am**  
 See time only, open to all preschool aged children and babies  
 Pay per week. Please call 01425 871115, email: pcc@pccpympton.org.uk  
 Pympton Methodist Church Rooms 3, 10 Park Lane,  
 opposite Pympton Co-op Hall, next to Waterloo.

**FRIDAY**  
**Playgroup 9.30-11.30am**  
 See time only, open to all preschool aged children and babies  
 Pay per week. Please call 01425 871115, email: pcc@pccpympton.org.uk  
 Pympton Methodist Church Rooms 3, 10 Park Lane,  
 opposite Pympton Co-op Hall, next to Waterloo.

**SATURDAY**  
**Playgroup 9.30-11.30am**  
 See time only, open to all preschool aged children and babies  
 Pay per week. Please call 01425 871115, email: pcc@pccpympton.org.uk  
 Pympton Methodist Church Rooms 3, 10 Park Lane,  
 opposite Pympton Co-op Hall, next to Waterloo.

**SUNDAY**  
**Playgroup 9.30-11.30am**  
 See time only, open to all preschool aged children and babies  
 Pay per week. Please call 01425 871115, email: pcc@pccpympton.org.uk  
 Pympton Methodist Church Rooms 3, 10 Park Lane,  
 opposite Pympton Co-op Hall, next to Waterloo.

**MONDAY**  
**Playgroup 9.30-11.30am**  
 See time only, open to all preschool aged children and babies  
 Pay per week. Please call 01425 871115, email: pcc@pccpympton.org.uk  
 Pympton Methodist Church Rooms 3, 10 Park Lane,  
 opposite Pympton Co-op Hall, next to Waterloo.

**TUESDAY**  
**Playgroup 9.30-11.30am**  
 See time only, open to all preschool aged children and babies  
 Pay per week. Please call 01425 871115, email: pcc@pccpympton.org.uk  
 Pympton Methodist Church Rooms 3, 10 Park Lane,  
 opposite Pympton Co-op Hall, next to Waterloo.

**WEDNESDAY**  
**Playgroup 9.30-11.30am**  
 See time only, open to all preschool aged children and babies  
 Pay per week. Please call 01425 871115, email: pcc@pccpympton.org.uk  
 Pympton Methodist Church Rooms 3, 10 Park Lane,  
 opposite Pympton Co-op Hall, next to Waterloo.

**THURSDAY**  
**Playgroup 9.30-11.30am**  
 See time only, open to all preschool aged children and babies  
 Pay per week. Please call 01425 871115, email: pcc@pccpympton.org.uk  
 Pympton Methodist Church Rooms 3, 10 Park Lane,  
 opposite Pympton Co-op Hall, next to Waterloo.

**FRIDAY**  
**Playgroup 9.30-11.30am**  
 See time only, open to all preschool aged children and babies  
 Pay per week. Please call 01425 871115, email: pcc@pccpympton.org.uk  
 Pympton Methodist Church Rooms 3, 10 Park Lane,  
 opposite Pympton Co-op Hall, next to Waterloo.

**SATURDAY**  
**Playgroup 9.30-11.30am**  
 See time only, open to all preschool aged children and babies  
 Pay per week. Please call 01425 871115, email: pcc@pccpympton.org.uk  
 Pympton Methodist Church Rooms 3, 10 Park Lane,  
 opposite Pympton Co-op Hall, next to Waterloo.

**SUNDAY**  
**Playgroup 9.30-11.30am**  
 See time only, open to all preschool aged children and babies  
 Pay per week. Please call 01425 871115, email: pcc@pccpympton.org.uk  
 Pympton Methodist Church Rooms 3, 10 Park Lane,  
 opposite Pympton Co-op Hall, next to Waterloo.

**MONDAY**  
**Playgroup 9.30-11.30am**  
 See time only, open to all preschool aged children and babies  
 Pay per week. Please call 01425 871115, email: pcc@pccpympton.org.uk  
 Pympton Methodist Church Rooms 3, 10 Park Lane,  
 opposite Pympton Co-op Hall, next to Waterloo.

Community magazine design and artwork for INSIDE Magazines.

# INSIDE POYNTON

The last couple of weeks have been difficult for everyone and the future is looking just as uncertain. We want to reassure you that we are closely monitoring the COVID-19 situation and have our magazines and the safety of our delivery team not live on printed matter, packages or letters of any length of time, so please don't worry about going to print all event details are correct, assume that some will be postponed or go to anything. And yes, I know travel is so we can use some of this enforced time to dream and plan!

As like this that we become acutely aware of importance of supporting small and local shops, services and tradespeople. Local where we can, look out for our and all stick together as a community once-in-a-lifetime (we hope) situation.

*Claire*  
 Editor: Claire Hawker  
 1625 879611  
 352a Park Lane,  
 SK12 1RL  
 @emagazines.co.uk  
 @insides.co.uk

Once I found this was a thing, I researched all that I needed to know to make my very own special Millennium Falcon. Foundation paper gives the was Amazing!  
 One I found this was a thing, I researched all that I needed to know to make my very own special Millennium Falcon. Foundation paper gives the was Amazing!  
 One I found this was a thing, I researched all that I needed to know to make my very own special Millennium Falcon. Foundation paper gives the was Amazing!



### What's INSIDE this month

- 4 Poynton People
- 7 St Martin's Church
- 8 Diary of a Geeky Knitter
- 11 Is Birdwatching For You?
- 15 Beer & Book Club
- 16 Bring the Gym to You
- 20 In Touch
- 27 Growing Granny's Bonnets
- 32 The Walk
- 37 Real Life Motoring
- 43 Wild Adventures
- 44 Travel - USA
- 46 Recipe
- 48 INSIDE Guide
- 55 Children's Activities
- 56 Just 4 Kids
- 57 Puzzles
- 59 Puzzle Solutions
- 61 Useful Numbers
- 62 Classified Index

By Inside Magazines Ltd. We cannot be held liable for contributors or any advert content, or endorse companies, products or services etc, but we cannot always guarantee this. © 2020. Material from this magazine may not be reproduced without permission from Inside Magazines Ltd.

**Don't forget!**  
 Copy deadline for the next issue is  
**FRIDAY 8 MAY**

# in touch

your local community noticeboard

APRIL - MAY 2020

## ANSON ENGINE MUSEUM RE-OPENS AFTER WINTER BREAK

"We've lived in the area for years, the museum's just down the road and we've never been" is a comment frequently heard when new visitors arrive, so why not check out one of the largest collections of engines in Europe? The Anson Engine Museum is now recognised as one of the country's leading specialist museums, with over 250 gas and oil engines, many maintained in running order. The museum site also includes a workblacksmith's smithy, a woodland craft area, café and a local history section with a giant scale model of Poynton (c1900).

The museum reopens from 10am to 4pm on Sunday and Mondays, starting on 12 and 13 April, until it closes again for winter on 25 October. There will be craft steam demonstrations and special events each month see [www.enginemuseum.org](http://www.enginemuseum.org) for more details.

On Friday 8 May the museum is joining the international celebration of peace commemorating the 75th anniversary of the Victory in Europe. At 3pm Winston Churchill's speech will be played, the 'Battle of Britain' will be piped and the WW2 Heroes will be toast Sunday 10 May at 10.30am the Last Post will be

On both days there will be 1940s films showing the museum's cosy little cinema, there will be a special display of WW2 memorabilia for all WW2 folk who lost their lives, WW2 songs played on

display, particularly remembering the 35 Poynton Colliery and the colliery bell will be rung, celebrating the peace and in memory of all WW

## POYNTON AND DISTRICT ROTARY

Poynton Rotary carried out their annual Christmas collection on two Saturdays in December at Waitrose, Aldi and the Post Office. They are very grateful for the generosity of the Poynton people to raise the sum of £750 to support local charities and organisations.

This is just one of several local activities where funds are raised to help the local community. This year it will be held on the 10th of May. Put in your diaries and await further advertising with details on, acts and tickets, in the coming months.

## inside guide

selected events in your area

### WEDNESDAY 1 APRIL

**Poynton Philharmonic Society**, We welcome our Guest Speaker Dr Barry Evans, who will be discussing his extensive collection of Universal Postal Union stamps and related items. It is a fascinating subject of worldwide postal protocols, close to the colour of the stamps.  
Rev Phelps 01625 873443

**The North Room, The Centre, Park Lane, L46**  
1.30 to 3.30pm

### WEDNESDAY 1 APRIL

**Poynton Local History Society** "The Canal Cafe" presentation by Bernard Dennis, Annual Membership of the society is £12 and guests are always welcome at £3 per visit. Tel: 01625 873668

**St Pauls Community School, Marley Road, Poynton, SK12 1ST 3Jpm**

### THURSDAY 2 APRIL

Would you like to meet new friends? Thursday group is a social group for unattached people of mature years, with several activities run by the members every week. These include walking, dancing, badminton, theatre and restaurant visits.

For more info see [www.thursdaygroup.co.uk](http://www.thursdaygroup.co.uk) or ring Bill on 07505 576508, or just come along to new members night on the 1st Thursday in each month where you will be met by group members.

**The Bulls Head Pub, 33 Walmston Road, Handforth, SK9 3EH 8.30pm**

### SATURDAY 4 APRIL

**Magpie Chase Society** Brains Rehearsal advance tickets £12 or for the day £18 on the door, students £5. To reserve at advance price email: [magsoc@magpiechasesociety.org.uk](mailto:magsoc@magpiechasesociety.org.uk)

**Magpie Parish Church, Handth Grove 7.30pm**

### SUNDAY 5 APRIL

Plant nurseries' Fall: huge choice of quality, nursery-grown plants. At the time of year, there will be a brilliant line-up of expensive flowering plants that will come later with Fuchsia, Dahlias, early flowering perennials, shrubs and trees to provide interest in autumn and beds of later flowering plants to get planted for colour into the summer and beyond. Food and drinks available. Free parking in the Hall. £2 entry to Plant Fair. Details on [www.plantfairtraders.co.uk](http://www.plantfairtraders.co.uk)

**Stranmillis Hall, Stranmillis Park, off Hill Road, Stranmillis, Midlothian EH7 3AH, 10am to 4pm**

Community magazine design and artwork for INSIDE Magazines.

### TUESDAY 7 APRIL

**Arlington Hill Life, Laughin', Love and Survival by G Pugh** to meet us and see some of a new group company, a drink and a slice of More info from: Jackie Shaw 01625 873668

**Arlington Village Hall, Mill Lane, AD**  
1.30 to 3.30pm

### WEDNESDAY 8 APRIL

**The Art Society** March East Chester: Slicing a cooked was one of the veg groups in the 7th century prepared for lecture by Susan Kay-Hilliams, Chief Royal School of Headmasters, will use wonderful objects including iron and nails, and the stories they depict. Po welcome. To attend as a visitor £9.00

**Magpie Club, Handth Grove 7.30pm**

### THURSDAY 9 APRIL

**South District** Brain rehearsal will be "Yester Folk" Please contact Peter De or [perde@northdistrict.com](mailto:perde@northdistrict.com) for St George's Church Hall 7pm

### THURSDAY 9 APRIL

**The Family History Society of Cheshire** A round trip with the sand man from 18th March. Special focus, the sand's extraordinary life of access and eye business ventures, community, family history and more. admission £2. information email [bramhall@chfhs.org.uk](mailto:bramhall@chfhs.org.uk)

**United Reformed Church Hall, Bramhall SK9 2PL, 7.30pm**

### THURSDAY 9 APRIL

**Poynton Home**, Senior Horticulturist at Chester Zoo will be speaking on "The Conservation of Native Species, particularly at the zoo. Visitors welcome at £2. Further information from Diane on 07742 165573

**Royal British Legion Club, George Road West, Poynton, SK12 1XV 7.30pm**



## Growing Granny's Bonnets

by Martin Shaw

"Granny's Bonnets" or columbine are easy to grow, reliable and tough perennials that have popped up in cottage gardens from time immemorial. The proper name, aquilegia, comes from the Latin for "hag" from the resemblance of the shape of the flower to an old's face.

Most books will tell you to plant them in moist soil with a little shade. Most aquilegias will also show themselves into the shade, hottest parts of your garden and be perfectly content although the flowers may not last so long.

There are distinctive types for the alpine garden and large, long-stemmed types for the border. All are easy to grow from seed, although named varieties might not always come true. Aquilegia are notoriously promiscuous and if you grow more than one type, they will cross with any abandon producing mixed seedlings in a range of shapes and colours. If buying seed, you can use in April outdoors and have good sized plants to plant out in Autumn. If saving your own seed, sow in trays in a cold frame as soon as the seed is ripe and place them in March the following year.

You can also divide plants with care, but these divisions do take a while to root. Remember, all parts of the plants including the roots are poisonous. Aquilegias can be short-lived, going past their best after two or three years but I remember the same

"Mickona hybrids" plants flowering early in my parents' garden all my young life. The large flowers with their long backward-facing spurs were an immense delight to me.

These "long-spurred" types are the result of crossing two wild American types: cyanusella, with yellow flowers and canaliculata with blue. Lots of colours including red, pink and purple, often in partnership with white are now available.

Other species from America worth growing from seed are the red and yellow skunk and canadensis. I find these do appreciate a little more shade, more moisture in summer and better drainage in winter than some.

The European native varieties are the more traditional granny's bonnets usually in purple. Lots of colours



Continued over 27

# STUDENT REPS

Congratulations to the Student Representatives for the 19/20 academic year!

Their role is to represent the students on their course and gather feedback, opinions and insight to bring forward to staff to make positive changes. They will play a vital role in the college as they work hard to enhance the student experience.

## MUSIC PRODUCTION



**Curig Jervis**  
Music Production  
BA1



**Alexis Smith**  
Music Production  
BA2



**Adria Chatter**



## PROFESSIONAL MUSICIANS



**Connah Chapman**  
Professional Musicianship  
BA2 Guitar



**Taemar Lancaster**  
Professional Musicianship  
BAS Vocals



**Chris Ellis**  
Professional Musicianship  
BAS Drum

# Creative Industries

Can offer help and support with...

Project Development	Placements and Volunteering	Presenting your Event
Career Guidance	Artist Development	Collaborations
Music Industry Community	PR and Law	Commercial Performance Work

For further details on what we offer and how to access these services, head to the Creative Industries, Events and Guests Moodle page.

## 20% OFF MIXING AND MASTERING SERVICES WITH ROCK SNOMAN AT ALTAR STUDIOS

Software is great, but unless you want your music to sound the same as every kid with a laptop and pirated software, you need something extra to stand out to record labels. We can create that, with analog or digital, your music or almost. We have some of the most boutique and celebrated hardware available with equipment from Manley, API, SSL, Neve, Tube-Tech, Universal Audio, Crane Song, Public and more. What's more, all our work is performed by professional, experienced audio engineers using a mix of hardware and software, so you're guaranteed stand out results.

Please email alex@altarstudios.uk with your requirements/student id, and you will be sent a bespoke quote less 20%.

Visit the website: [www.altarstudios.uk](http://www.altarstudios.uk)



# MASTERCLASSES AND WORKSHOPS

## MASTERING SESSIONS WITH MIKE CAVE

16TH AND 18TH JANUARY 6-8PM

IN THE STUDIOS

(MAX PRODUCTION STUDENTS ONLY)

Mike Cave is a multi-platinum award-winning, multi-grammy BA Training an Awarded a Grammy for Best Student last year. He's running a series of masterclasses with Neilson (A&E), Andy Green (BBC), Corrie (BBC), Mark Brzezinski (Digital), Pauline (BBC), Holly (BBC), and Jonathan Lynch (Pine Studios, Oscar Central, USA). (TBC)

Places are limited - a strong request as a guest producer and mastering engineer.



## MASTERCLASS WITH PRS FOR MUSIC

THURSDAY 16TH JANUARY 2PM

VENUE TBC

Places are limited - a strong request as a guest producer and mastering engineer.

## THE DEFINITIVE WORD ON CLASSIC BRITISH SONGWRITING - AS TOLD BY THE SONGWRITERS THEMSELVES

Masterclasses with Author David Russell  
MONDAY 20 JANUARY 2PM

VENUE TBC

Industry vets of the UK's Great Masters revealed the secrets behind their art in a rare collection of exclusive interviews, conversations, digital masterclasses, and conversationally written, thoughtful approaches to writing, the masterclass looked from their individual beginnings, and the techniques and methods they have subsequently developed. The masterclass will offer a unique glimpse into the heart of the creative process from some of the greatest names in British popular music.

Quality of life of those will be available to find out more about the art of the session.

Quality of life of those will be available to find out more about the art of the session.



Steve has signed and worked with the likes of Christine, Faith, Peter and Deborah, the UK's biggest music publishers, including Luke Temple, Mobile, Train, Warner, Atlantic, Island, Decca, Polygram, EMI, Virgin, and more. He's also worked with the likes of Steve, Bob, and the other greats.



**Publishing Contract**  
A publishing contract is a legal document that sets out the terms and conditions of a publishing agreement between a writer and a publisher.

## THE WORLD OF MUSIC PUBLISHING

In Conversation with Steve Ferris

TUESDAY 22ND JANUARY 2PM

VENUE TBC

Why should songwriters and their labels deal with music publishers in any other way? A good music publisher is exactly what you need, offering him or her to promote songs to the maximum number of potential buyers on a negotiable good terms for their art. Steve Ferris is experienced across publishing companies such as Polar Music and is an expert on the to and music supervisors. He will give us the low down on what the industry is looking for, how it works, and what to look out for.

Steve has signed and worked with the likes of Christine, Faith, Peter and Deborah, the UK's biggest music publishers, including Luke Temple, Mobile, Train, Warner, Atlantic, Island, Decca, Polygram, EMI, Virgin, and more. He's also worked with the likes of Steve, Bob, and the other greats.

## WE WANT TO KNOW WHAT YOU DO!

Do you run your own company? Are you promoting your own gigs and events? Are you working with some great musicians? Have you been booked for a gig that you are excited about? Have you received a gig or event that you loved? Are you involved in an interesting project?

Whatever it is we want to know!

Send us all the info to [events@manchester.bimms.co.uk](mailto:events@manchester.bimms.co.uk) and we can help you promote it!

## WE WANT TO HEAR YOUR MUSIC!

We are regularly contacted for support slots, festival performances, and more across the city, and many more opportunities. Plus, we want to know by your music.

Send music links: Spotify, SoundCloud, YouTube, Facebook and contact email to [events@manchester.bimms.co.uk](mailto:events@manchester.bimms.co.uk)

Student magazine design and artwork for BIMM Institute Manchester.



design | web | print | host

# advertising

RESIDENTIAL, RESPITE & DAY CARE HOMES  
FOR OLDER PEOPLE IN NORTH YORKSHIRE

## THE MILLINGS

RATED AS  
OUTSTANDING  
BY CQC



North End, Bedale, North Yorkshire DL8 1AF  
Tel: 01677 423635  
[www.residential-homes.net](http://www.residential-homes.net)

## ST JOHN'S HOUSE

RATED AS  
OUTSTANDING  
BY CQC



Parker Lane, Kirk Hammerton,  
York, North Yorkshire YO26 5BT  
Tel: 01423 330480  
[www.residential-homes.net](http://www.residential-homes.net)



Putting you at the heart of our care



## THE MILLINGS

RESIDENTIAL, RESPITE & DAY  
CARE HOME FOR OLDER PEOPLE

RATED AS  
OUTSTANDING  
BY CQC



*Putting you at the heart of our care*

North End, Bedale, North Yorkshire DL8 1AF  
Tel: 01677 423635 [www.residential-homes.net](http://www.residential-homes.net)

A range of magazine ads for  
Clifton St Annes care homes.

**spring  
creative**  
design | web | print | host

# logo design



**BOOTIQUE**  
FITNESS



Corporate identity development.



# logo design



Corporate identity development.



# multimedia design

**Deloitte STREET CHILD WORLD CUP**  
DURBAN MARCH 2010

Exclusive prize from the FA for the school developing the best programme. See enclosed DVD for details.

A resource for Sports Colleges, School Sport Partnerships and County Football Associations to raise awareness of Children's Rights through the Street Child World Cup.

The FA Youth Sport Trust

Exclusive prize from the FA for the school developing the best programme. Insert CD for details.

The FA Youth Sport Trust

A resource for Sports Colleges, School Sport Partnerships and County Football Associations to raise awareness of Children's Rights through the Street Child World Cup.

A DVD housed in a folder for the Street Child World Cup, South Africa 2010 for Youth Sport Trust and the Football Association.



# multimedia design



A PDF presentation for the Golf Show  
by American Golf.

# MATALAN YOUR ACTIVITY

## Development Plan



Parkour  
Rowing  
Tchoukball  
Street Cheer  
Ultimate Frisbee  
Orienteering  
Softball  
Dodgeball  
Jump Rope

MATALAN  
Sporting  
Promise

working in partnership with  
Youth Sport Trust

# multimedia design



A DVD housed in a folder for Matalan, The Health Lottery and Youth Sport Trust.

spring  
creative

design | web | print | host

# multimedia design



An online interactive presentation for  
Trojan Services Ltd.

# multimedia design

## COMPETITION TEMPLATES AND GAMES TO PLAY

The disc contains Competition Templates and Games to Play. Click on the icons to access what you want.



**LEAGUE TABLE**

**KNOCKOUT**

**BOX LEAGUE**

**ORDER OF PLAY**


**GAMES TO PLAY**



Get into Football



Home **League Table** Knockout Box League Order of Play Retrieve Saved Template




League table

Please enter the scores for Round 1

Team 1	VS	Team 2
Team 3	VS	Team 4
Team 5	VS	Team 6
Team 7	VS	Team 8
Team 9	VS	Team 10
Team 11	VS	Team 12
Team 13	VS	Team 14
Team 15	VS	Team 16
Team 17	VS	Team 18
Team 19	VS	Team 20

Ends

4  
8  
12  
16



Interactive online game for The Football Association and Youth Sport Trust

# web development



Responsive, Joomla web development.

# web development



Responsive, Joomla web development.

# web development



Responsive, Joomla web development.



# exhibition design

Exhibition design for Trojan Services Limited at Raitex, NEC.





For all your design, print and web requirements

t: 01925 714203 / 07759 432526

e: [info@spring-creative.co.uk](mailto:info@spring-creative.co.uk)

[www.spring-creative.co.uk](http://www.spring-creative.co.uk)